



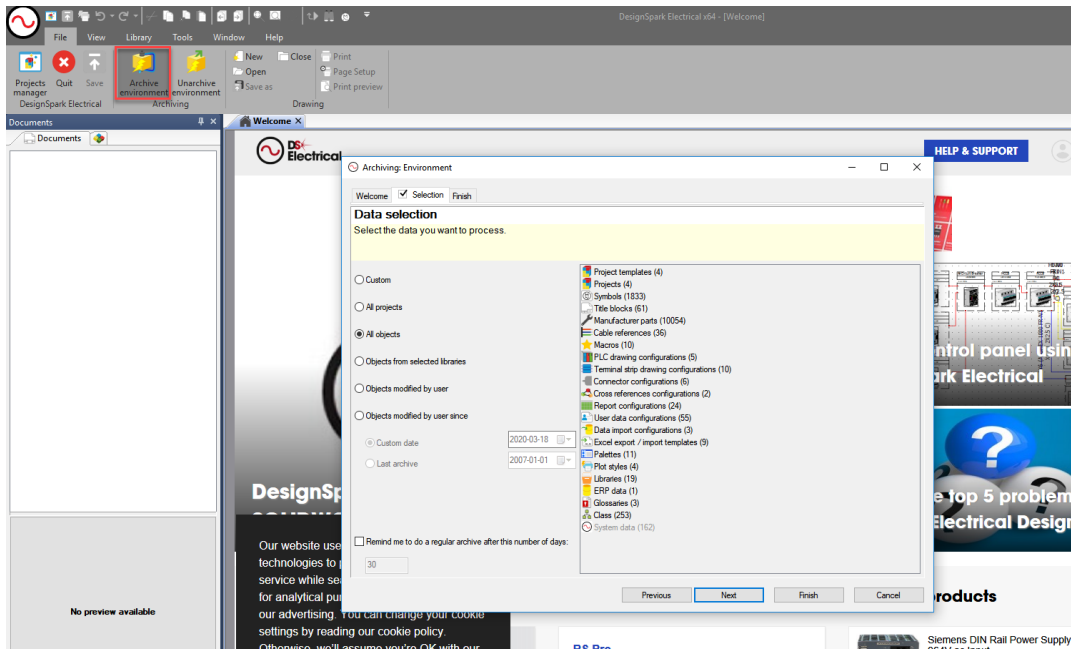
Upgrading from DesignSpark Electrical to SOLIDWORKS Electrical Schematic (Professional or Standard)

SOLIDWORKS Electrical provides significant increases in functionality over DesignSpark Electrical for professional users and those with larger designs. The functionality matrix included on the next page highlights the differences.

When you upgrade from DesignSpark Electrical (DSE) to SOLIDWORKS Electrical Schematic you can use the designs that you created using DSE (but not the other way).

Users of older versions of DesignSpark Electrical (DSE) need to do the following as their old licenses of DSE have expired:

- Do Not Uninstall your older DesignSpark version, the new DSE installation will update it
- If you are running DSE 1.3 (version 2018.0.3), you need to download and upgrade to version 2.0 (version 2019.0.5) or newer, otherwise move to next step
- As a general precaution, please make a backup copy of the DSE 1.3 data folder before installing DSE 2.0.
- When installing DSE 2.0 or later, make sure to use default settings so the same data folder is used as with the previous version
- Start DSE 2.0 (or newer)
- Please visit: File / Archive Environment.
Using the 'Custom' option you can choose to backup project only or the whole data set. This creates a *.tewzip archive. SOLIDWORKS Electrical (SWE) can now use the entire electrical environment from DSE.



- To upgrade to SOLIDWORKS Electrical Schematic, please do the following
 - Review the system requirements
<https://www.solidworks.com/sw/support/SystemRequirements.html>
 - Obtain the software then install it.
 - Please note: you can install SWE on the same or different machine.
 If installed on same machine, DO NOT use the same data folder as DSE, the easier way is to keep the default install settings for SWE.
- Start SWE, go through initialization steps if required, license agreement, data initialization.
- In SWE, please visit: File / Unarchive environment, select *.tewzip archive as noted above.
- Locate your Archived Environment and unarchive it, so you can continue with your electrical design work using the new, expanded functionality in SOLIDWORKS Electrical (see matrix below).
- If you prefer, you can migrate only specific projects archiving them in DSE and then unarchiving in SWE.

